



welcome

Back to School Night
22-23



My Contact Information

About Me

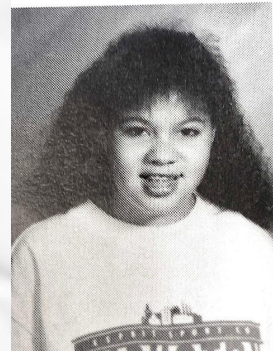
Education



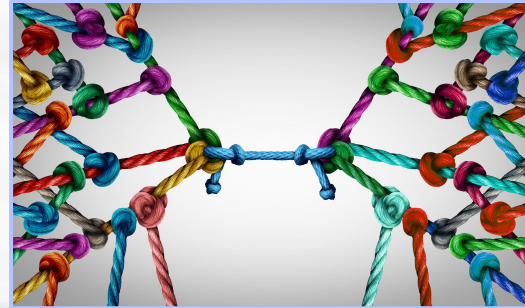
Family



Fun Fact



My Philosophy on Education



Instructional Priorities

1. The task and student work are at the appropriate taxonomy level or higher and demonstrate the standard as it is intended.
2. Student teammates interact equally as they make connections between their learning and their teammates' learning.
3. We assess and provide feedback on what we value: deeper, authentic learning aligned to grade-level standards.
4. Our intervention and support systems align with core instruction and include early identification and exit based on real-time learning.

William Jackson

Assistant Principal

Climate and Culture

Athletics

Special education services

Student discipline

Student attendance

Staff evaluations

Climate and culture

After school activities

Student Support

Our school counselors are here to support students' *academic growth, social-emotional needs, and career exploration & development.*

Mr. Svendsen

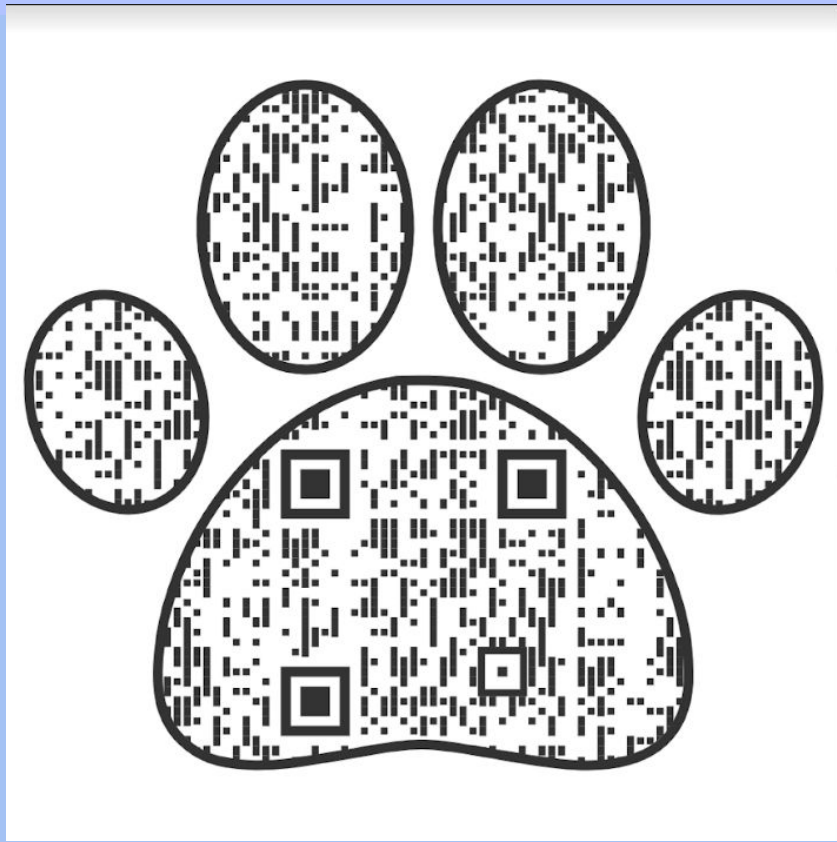
jeremiahsvendsen@u-46.org

(A-L)

Mrs. Gentleman

kellygentleman@u-46.org

(M-Z)



Survey



PTO

BACK TO SCHOOL NIGHT



Bell Schedule

1st Period	6:35 pm-6:42 pm
2nd Period	6:45pm-6:52pm
3rd Period	6:55pm-7:02pm
4th Period	7:05pm-7:12pm
5th Period	7:15pm-7:22pm
6th Period	7:25pm-7:32pm
7th Period	7:35pm-7:42pm
8th Period	7:45pm-7:52pm